

XEROX®

Phaser® 6180 / 6180MFP



Technology | Document Management | Consulting Services

print | copy | scan | fax

Advanced **color** made easy



Phaser 6180

color printer

Phaser 6180MFP

color multifunction printer

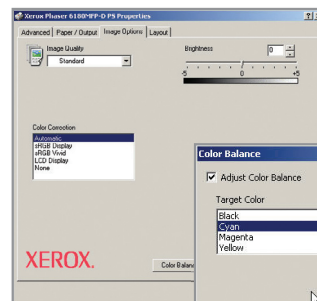
Xerox offers a choice of value-packed color devices for your busy small-to-medium-size business, each designed to handle your office document demands with speed and precision:

The Phaser 6180 color printer delivers fast printing, outstanding color quality and unmatched ease-of-use. The Phaser 6180MFP color multifunction printer adds to those strengths with advanced copying, scanning and faxing — all the tools you need to get more work done with optimal efficiency.

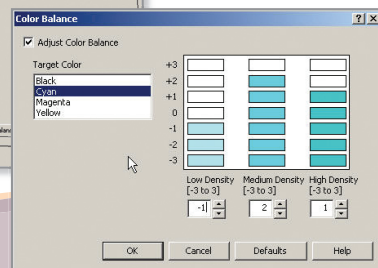
Print to please

Need to impress? For outstanding print quality, these devices perform beautifully.

- 600 x 600 x 4 dpi resolution delivers an amazing 16 shades of color per pixel — often perceived as higher print quality than many 2400 dpi devices.
- EA-HG toner technology — with particles engineered to have uniform size and shape — gives your printed images superior detail and clarity. It's the same high-quality toner used in our professional graphic-arts color printers and MFPs.
- True Adobe® PostScript® 3™ print language ensures your jobs are printed accurately every time.
- PANTONE® Color approved solid-color simulations, Xerox color correction technology and simple calibration tools automatically give you the right color or let you fine-tune colors for special applications.



With simple on-screen color manipulation tools, the Phaser 6180 and Phaser 6180MFP make it easy to ensure that the colors you want are the colors you get.



print

Phaser 6180



Step up the pace

The Phaser 6180 laser printer gets your jobs out quickly. Very quickly.

- A print speed of up to 20 ppm in full color brings your work to colorful life without slowing you down.
- Print black-and-white — even complex or large jobs — at up to a speedy 26 ppm thanks to a powerful 400 MHz processor and 128 MB of memory (expandable to 1,152 MB).
- A first-page-out time as quick as 10 seconds means your job's out faster than your trip to the printer.
- The 60,000-page-per-month duty cycle easily handles a steady flow of office document demands.
- Multiple connectivity options — Ethernet, USB, parallel and optional wireless — give you the power and flexibility to support your diverse workgroup.

print copy scan fax

Phaser 6180MFP

Go full speed

Robust multifunction performance that easily keeps up with the busy pace of your entire office.

- One space-saving device does the work of four standalone machines, combining powerful printing, copying, scanning and faxing.
- Fast color at up to 20 ppm lets your entire workgroup enjoy the benefits of color without slowing down.
- Black-and-white prints at up to a quick 31 ppm regardless of your job's size or complexity, thanks to a 400 MHz processor and 348 MB of memory (expandable to 1,408 MB).
- A scan speed of up to 7 color or 20 black-and-white scans per minute lets you quickly go from paper to digital.
- Walk-up fax and LAN fax (fax from the print driver) delivers up to 400 x 400 dpi resolution, and includes JBIG compression technology for faster transmissions.



Intuitive control panel makes copy, fax and scan functions easy to use, and also displays job status and toner levels.

One-button copying makes walkup use quick and easy. No need navigating a menu just to make a copy.

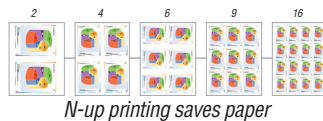


Phaser 6180MFP control panel

Work hard, print (and copy, scan and fax) easy

From installation to everyday operation, these devices provide a wealth of features to make office life easier.

- Complete installation takes only minutes, thanks to the advanced Phaser Installer software.
- Check print job status, manage your fax address book (6180MFP) and get quick access to online support right from your desktop with CentreWare® IS internal web server.
- Professional layout functions like N-up, Posters, Booklet and ID Card Copy (6180MFP) increase your document options.
- Built-in support for Apple Bonjour™ (standard) and included Mac drivers will please mixed PC/Mac environments.
- Instant pop-up messages appear on your monitor if print issues arise, thanks to PrintingScout® alerts.
- Super-quiet operation makes the Phaser 6180 and Phaser 6180MFP printers office-friendly.



N-up printing saves paper

Fits your office

- 1 The standard 150-sheet **Tray 1** (MPT) supports a wide range of custom media and sizes.
- 2 The standard 250-sheet **Tray 2** reliably feeds weights up to 80 lb. cover and custom sizes.
- 3 An optional 550-sheet **Tray 3** boosts total paper capacity to 950 sheets.
- 4 The **Automatic Document Feeder** (6180MFP) allows scanning and faxing of multiple-page documents up to 50 sheets.
- 5 Money-saving and fast **automatic duplex** option for two-sided printing (standard on D and DN configurations).
- 6 Standard **348 MB memory** (expandable to 1,408 MB) for 6180MFP and **128 MB** (expandable to 1,152 MB) for 6180 allows for larger print jobs.
- 7 Convenient front door provides **easy access** to the simple-to-replace print cartridges. Choose the high-capacity cartridges for cost savings and nonstop printing. Standard-capacity cartridges are available if printing loads are lighter.



Powerful scanning solutions

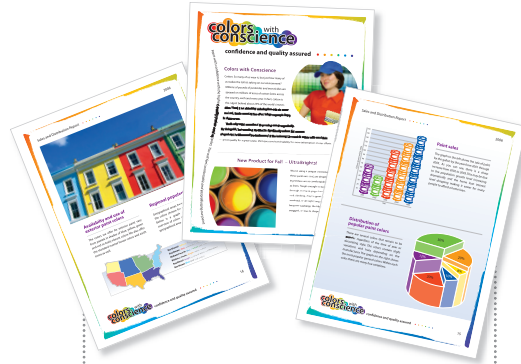
The Phaser 6180MFP converts your paper documents into ultraportable digital files for efficient sharing, organizing and archiving.

- *Express Scan Manager* (standard) lets you easily set up default parameters — like image type, scan resolution, paper size and output destination — for faster, simplified scanning.
- Choose from flexible document-routing options like *Scan to Email*, *Scan to Server (FTP)* and *Scan to Computer* (using SMB network protocol).
- Download email addresses directly to the device-based *Address Book Editor* for easy front-panel access when sending scans.
- Save your scans as industry-standard PDF, JPEG or TIFF file formats.
- Manage documents and convert scanned images into editable text using *Scan to PC Desktop*® software (optional).

Phaser® 6180

Phaser® 6180MFP

PRINT



What do both products have in common?

Outstanding laser color quality featuring Xerox-exclusive EA-HG toner technology, which gives your printed images superior detail and clarity.

PRINT

COPY

SCAN

FAX



Colorful, easy to use and packed with value

COLOR

The impact of color

Color attracts, clarifies and sells. It is one of the most effective business tools available.

VALUE

High-end color tools, low-end price

Even businesses on a tight budget can enjoy exceptional color quality.

TEAM PLAYER

Designed to fit any office

These devices easily connect to your network and fit perfectly in workgroups with both PC and Mac users.



	Phaser 6180N	Phaser 6180DN	Phaser 6180MFP/N	Phaser 6180MFP/D
Speed	Up to 20 ppm color / 26 ppm black-and-white		Up to 20 ppm color / 31 ppm black-and-white	
Duty Cycle	60,000 pages / month ¹			
Paper Handling				
Paper input	Standard Tray 1 (MPT): 150 sheets; Custom sizes: 3 x 5 in. to 8.5 x 14 in. / 76.2 x 127 mm to 220 x 355.6 mm			
	Tray 2: 250 sheets; Custom sizes: 5.8 x 8.2 in. to 8.5 x 14 in. / 148 x 210 mm to 220 x 355.6 mm			
Optional	Tray 3: 550 sheets; Custom sizes: 5.8 x 8.2 in. to 8.5 x 14 in. / 148 x 210 mm to 220 x 355.6 mm			
Document handler	NA		Automatic Document Feeder: 50 sheets; Custom sizes: 5.8 x 8.2 in. to 8.5 x 14 in. / 148 x 210 mm to 220 x 355.6 mm	
Paper output	300 sheets			
Two-sided output	Optional	Standard	Optional	Standard
Copy				
Copy speed	NA		Up to 7 cpm color / 20 cpm black-and-white	
First-page-out time	NA		As fast as 20 seconds color / 11 seconds black-and-white	
Resolution (max)	NA		600 x 600 dpi	
Copy features	NA		Collation, Reduce/Enlarge, ID Card Copy, Poster	
Print				
First-page-out time	As fast as 10 seconds color / 10 seconds back-and-white			
Resolution (max)	600 x 600 x 4 dpi			
Processor	400 MHz			
Memory (std / max)	128 MB / 1,152 MB		384 MB / 1,408 MB	
Connectivity	10/100Base-TX Ethernet, USB 2.0, Parallel, Optional: multiprotocol network card, wireless network adapter			
Page Description Languages	PCL® 6 emulation, Adobe® PostScript® 3™			
Print features	N-up, Booklet printing, Fit to page, Transparency separators, Skip blank pages, Covers/Separators ² , Poster ² , Watermarks ² , Overlays ² , Banner sheets ² , Proof Print ³ , Secure Print ³ , RAM collation ³			
Scan				
Scan destinations	NA		Scan to Computer Application (USB), Scan to Server (FTP), Scan to Computer (using SMB), Scan to Email	
Scan features	NA		JPEG, TIFF, PDF, Color Scanning, Xerox Scan to PC® software (optional)	
Fax				
Fax features	NA		Walk-up fax and LAN fax (fax from the print driver) (33.6 Kbps with MMR/MR/MH, JBIG, JPEG compression), Junk fax barrier, Memory fax, Secure receive, Delay fax, Color fax, Speed dials, Group dials	
Warranty	One-year on-site warranty, Xerox Total Satisfaction Guarantee			

¹ Print Volume uniformly distributed over 30 days. ² Accessed via PCL driver. ³ Standard for 6180MFP. Requires minimum 256 MB RAM for 6180 printer.

Device Management

CentreWare® IS Embedded Web Server, CentreWare Web, PrintingScout™, email alerts

Print Drivers

Windows® 2000/2003 Server/XP Pro/XP/Vista, Mac OS® X version 10.2 or higher, Solaris 8/9/10, HPUX® 11.0, AIX® 4.3.3, Turbo Linux™ 10 Desktop, RedHat® ES3/ES4, SUSE™ 9.2/9.3, Fedora™ Core 1, YellowDog 3.x

Font Support

PostScript® fonts: 136; PCL® fonts: 81

Media Handling

All trays: 17 – 40 lb. bond to 80 lb. cover / 65 – 220 gsm; Two-sided output: 17 – 43 lb. bond / 65 – 163 gsm
Automatic Document Feeder (6180MFP): 17 – 32 lb. bond / 65 – 120 gsm
Media types: Plain paper, envelopes, labels, transparencies, card stock, glossy coated

Color Standards

PANTONE® Color approved solid-color Simulations, Color Correction, ICC Profile

Operating Environment

Temperature:
Operating: 50° to 90° F / 10° to 32° C
Storage: 32° to 95° F / 0° to 35° C
Relative humidity: 15 to 80%

6180: Sound pressure: Operating: 49.1dBA, Standby: 28.6dBA
Sound power level: Operating: 6.62B, Standby: 4.0B

6180MFP: Sound pressure: Operating: 51.6dBA, Standby: 26.8dBA
Sound power level: Operating: 6.59B, Standby: 4.18B

Electrical

6180: Power: 110–127 VAC or 220–240 VAC, 50/60 Hz
Power consumption:
Standby: 70 W (110 V), 68.9 W (220 V),
Printing: 450 W (110 V), 410 W (220V),
Power Save: 5.4 W (110 V), 6.3 W (220 V)
ENERGY STAR® qualified

6180MFP: Power: 110–127 VAC or 220–240 VAC, 50/60 Hz
Power consumption:
Standby: 90 W, Printing: 500 W,
Power Save: 17 W
ENERGY STAR® qualified

Dimensions (WxDxH)

6180: 15.7 x 19.4 x 18.5 in. / 400 x 493 x 470 mm; Weight: 6180N: 59.8 lb. / 27.2 kg, 6180DN: 62.3 lb. / 28.3 kg
6180MFP: 18.1 x 20.5 x 28.7 in. / 460 x 520 x 730 mm; Weight: 6180MFP/N: 88.2 lb. / 40 kg, 6180MFP/D: 90.4 lb. / 41 kg

Certifications

FCC Part 15, Class B, FCC Part 68, Listed UL 60950-1/CSA 60950-1-03, CE Mark applicable to Directives 73/23/EEC, 89/336/EEC, and 1999/5/EC, RoHS Directive 2002/95/EC, WEEE Directive 2002/96/EC

Supplies

Standard-capacity print cartridge:*
Black: 3,000 pages 113R00722
Cyan: 2,000 pages 113R00719
Magenta: 2,000 pages 113R00720
Yellow: 2,000 pages 113R00721
High-capacity print cartridge:*
Black: 8,000 pages 113R00726
Cyan: 6,000 pages 113R00723
Magenta: 6,000 pages 113R00724
Yellow: 6,000 pages 113R00725

Options

550-sheet feeder -
Phaser 6180 097S03744
Phaser 6180MFP 097S03833
256 MB Phaser Memory 097S03743
512 MB Phaser Memory 097S03635
Automatic two-sided printing unit 097S03746
Scan to PC Desktop -
Professional Small Business Edition
SE Small Business Edition
See web for order details:
www.xerox.com/office/scantodesktop
Multi-Protocol Network Card -
Phaser 6180 097S03773
Phaser 6180MFP 097S03745**
Wireless Network Adapter 097S03740



Copyright © 2007 XEROX CORPORATION. All rights reserved. Contents of this publication may not be reproduced in any form without permission of XEROX CORPORATION. XEROX®, Phaser®, CentreWare® and Scan to PC Desktop® are trademarks of XEROX CORPORATION in the U.S. and/or other countries. Total Satisfaction Services is a service mark of XEROX CORPORATION. All other trademarks are the property of their respective manufacturers. PANTONE Colors generated may not match PANTONE-identified standards. Consult current PANTONE publications for accurate color. PANTONE®, and other Pantone, Inc. trademarks are the property of Pantone, Inc. As an Energy Star partner, Xerox Corporation has determined that this product meets the Energy Star guidelines for energy efficiency. Energy Star and the Energy Star mark are registered U.S. marks. The information in this brochure is subject to change without notice. 9/07 610P729160B 61CBR-01UC

*Average standard pages. Declared Yield in accordance with ISO/IEC 19798. Yield will vary based on image, area coverage and print mode.

** Available December 2007